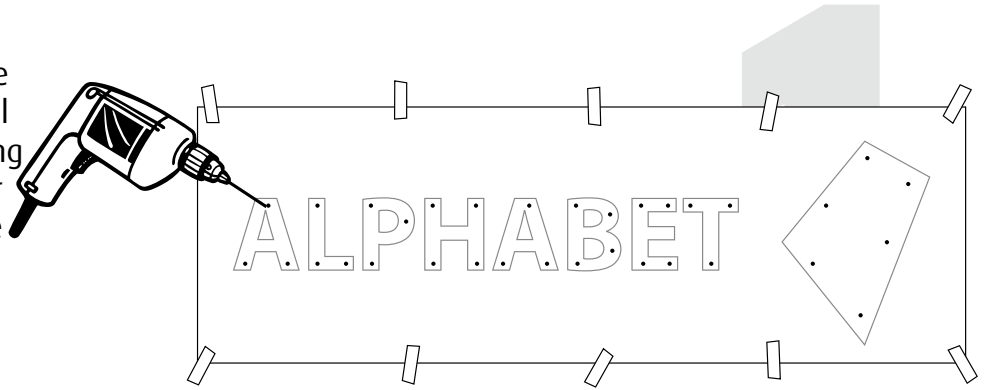
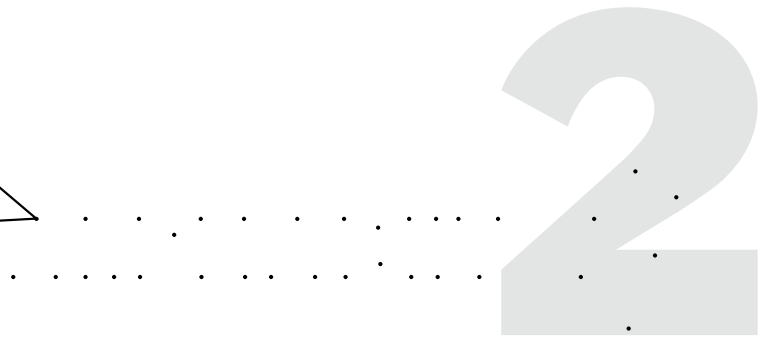
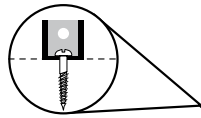


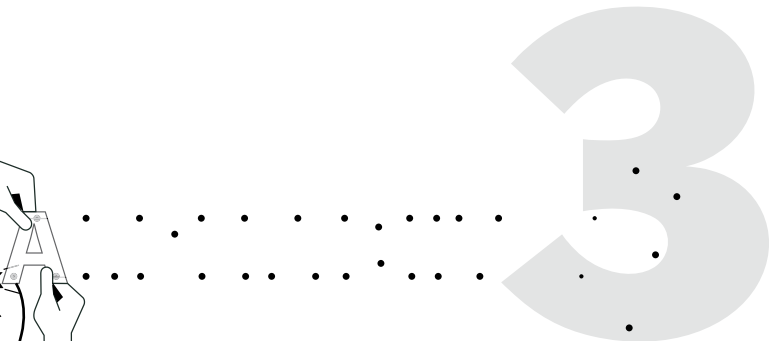
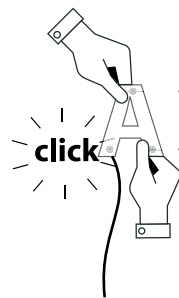
1. Attach the 1-1 drawing to the wall with some tape and drill the holes through the drawing in the wall. This are holes for the nibs and holes to put the wire through.



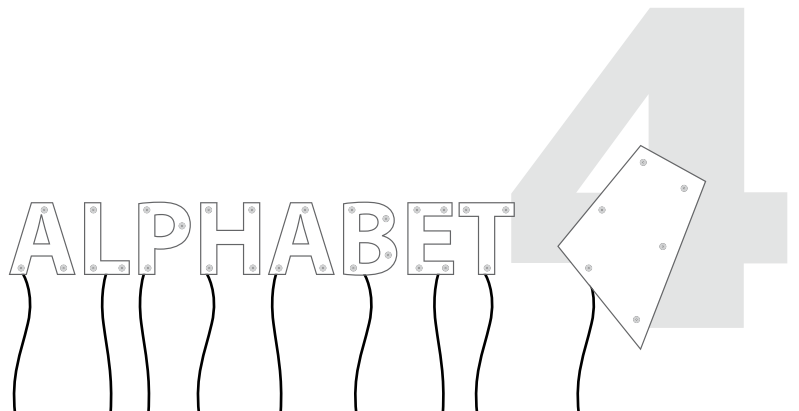
2. Screw the sign-nibs in the wall and leave the holes for the wires untouched.



3. Put the wire trough the wire-holes and put the signs on the sign-nibs with a firm hand untill the 'click'.

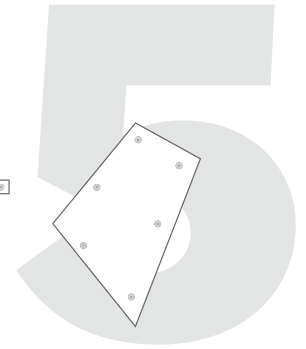


4. You can also leave the wires outside and put them in a cable-kanal or tube.



5. If all wires are connected, your sign is ready.

ALPHABET



---

Best use: Turn the sign on just 1 hour before sundown and turn it off when everybody is asleep. During the winter-period you can turn the sign on at 6 AM and turn it off around 9 AM. With this rhythm the sign will last years longer.

Maintenance: Just clean the sign every year with a soft towel and some water.

