

Productsheet Slimline light sign letters

Description

Thin YSO LED light sign letters are produced according a patented production process. The letters are watertight bonded without casting the LEDs themselves. The letters are not painted to cover parts which won't get illuminated so paint can't be damaged. The letters are solid, can be illuminated on every side and keep heat far within operational limits.

Basic data

- Fully watertight; IP67 by patented production
- Mounting on spacers, threaded rods or glued on a frame or direct to the wall
- Letter coloring by color PMMA or foil
- Illumination by LED, not casted and serviceable
- Every side of the letter can be illuminated
- No paint so no light-spots by damages

Technical data

- Suitable for letters from 80mm up to ± 400 mm tall, depending on legwidth; min. 16mm, max 100mm for white and 80mm for colored letters
- Thickness 22mm
- Basic material PMMA and foam PVC. For public facilities also available in PC or PET-G with fire-class B1
- Illumination; dimmable 12V LED; white: Cool-white (± 6000 K), Neutral-white (± 4000 K), Warm-white (± 3000 K); Colors: red, green, blue yellow, amber or RGB
- Weight: 24 Kg m²
- Heat exchange; $\Delta T < 12^\circ\text{C}$ (cool-white)
- Connection, 230V AC with transformer, 230AC/12DC.

Usage

YSO Slimline illuminated letters are suited for outdoor use in all weather conditions, from -25 up to 55°C. Connection is with supplied transformer to 230V or by choke coil to 12V boat- or car battery.



Maintenance

The YSO Slimline illuminated letters are resistant against water, moisture and UV influences. To clean the letters use a soft towel and water or some mild soap.

Warranty

1 year on all electrical parts (transformer, fuses) 2 years on LEDs and bonding.

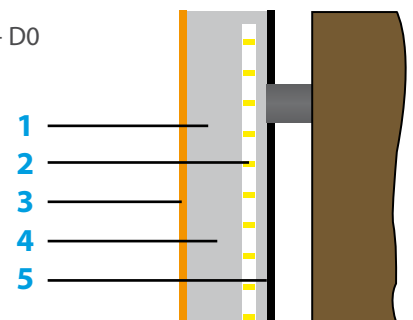
Fireclass

PMMA: B2

Foam PVC: B1 - S3 - D0

PETG: B1

Polycarbonaat (PC): B1 - S2 - D0



1 Acrylglas / PMMA Körper

Acrylic / PMMA body

Acrylaat / PMMA body

2 LED - nicht eingegossen

LED - not casted

LED - niet ingegoten

3 Front PMMA oder Folien

Front PMMA or foil

Voorzijde PMMA of folie

4 Seiten Weiß oder farbiges PMMA

Sides white or colored PMMA

Zijkanten wit of kleur PMMA

5 Rücken PVC oder PMMA

Backing PVC or PMMA

Achterzijde PVC of PMMA