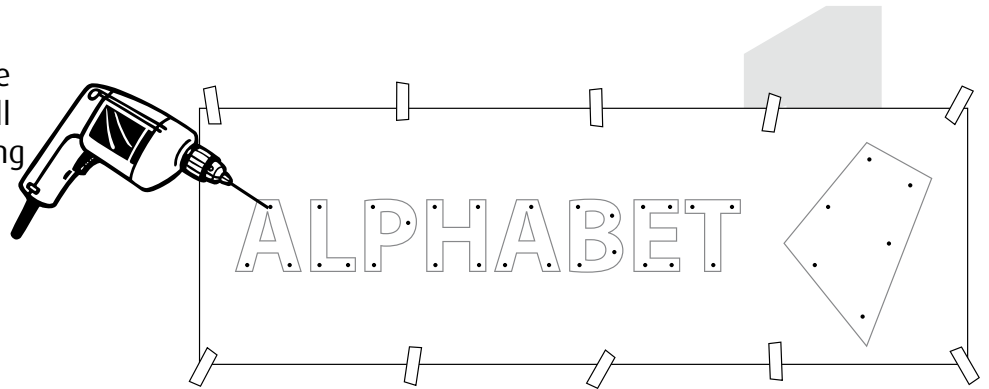
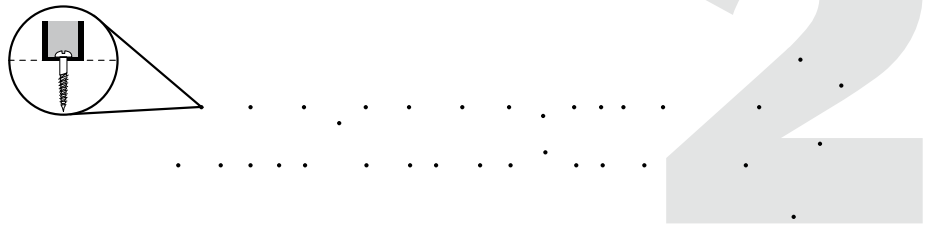


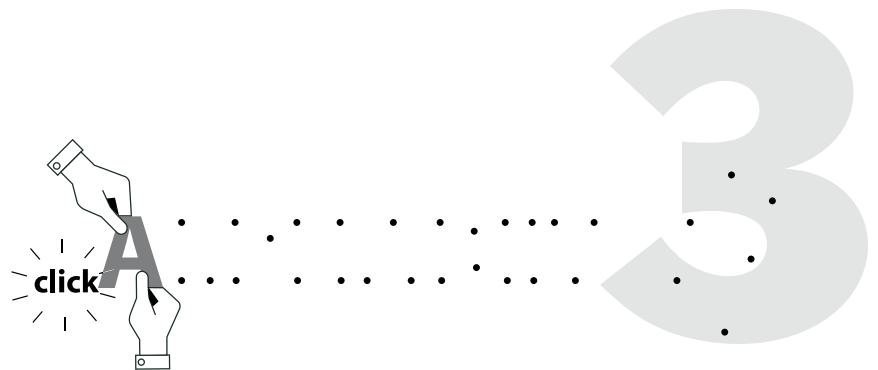
1. Attach the 1-1 drawing to the wall with some tape and drill the holes through the drawing in the wall.



2. Screw the sign-nibs in the wall.



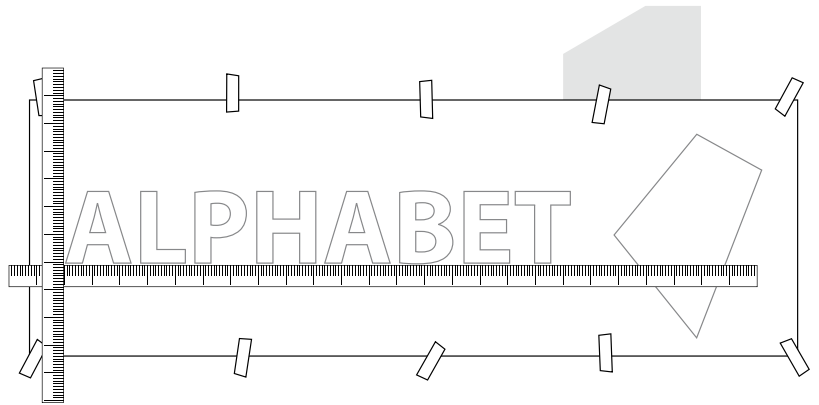
3. Put the signs on the sign-nibs with a firm hand. They will lit directly if they are properly placed with a 'click'.



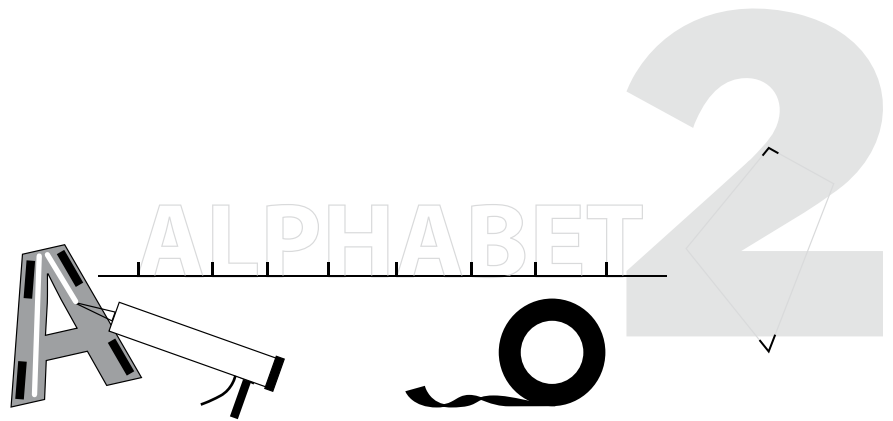
4. If all signs are placed at the sign-nibs, you are ready, enjoy...



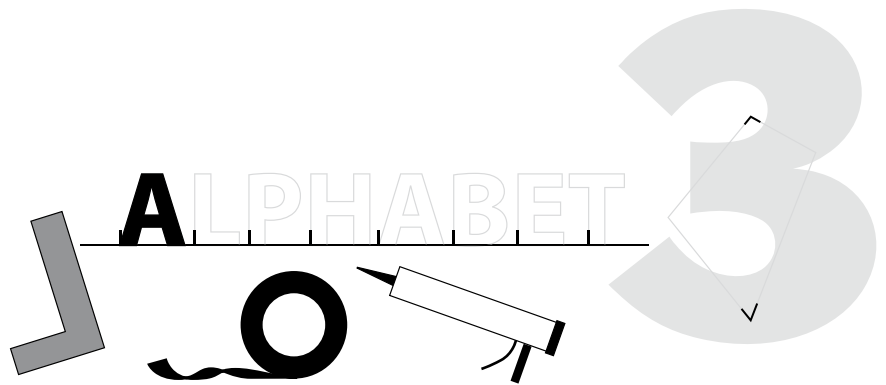
1. Attach the 1-1 drawing to the wall with some tape and draw some markers on the wall where the signs need to be placed.



2. Put some tape at the back of each sign for short-term adhesive and put supplied glue next to the tape for long-term adhesive.



3. Attache all sign to the wall with some tape for short-term and glue for long-term adhesive.



4. If all signs are placed you are ready, enjoy...

